



WATER

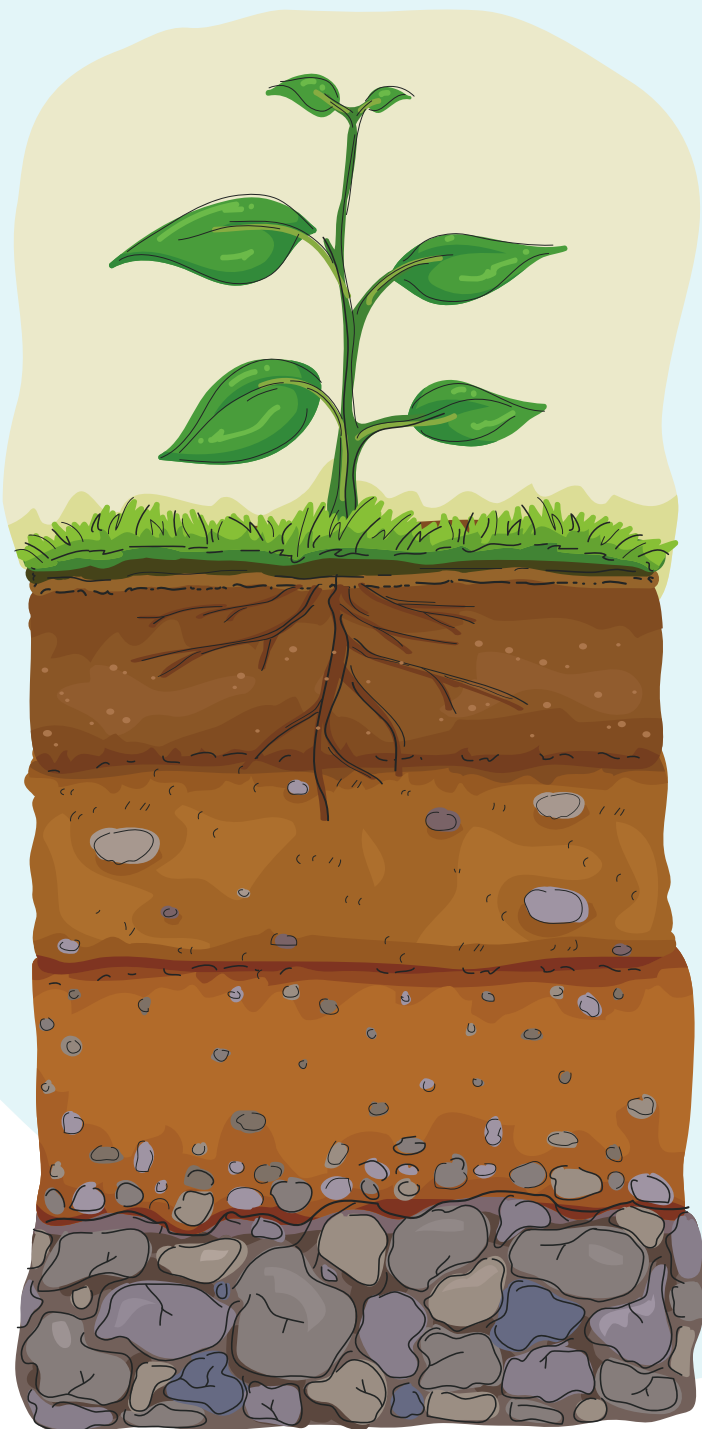
includes terrain analysis, sources (natural and artificial connections to the system), flowing and stagnant water, precipitation, groundwater, terrain slope, and elements capable of collecting and storing water.

Urban Permaculture Education



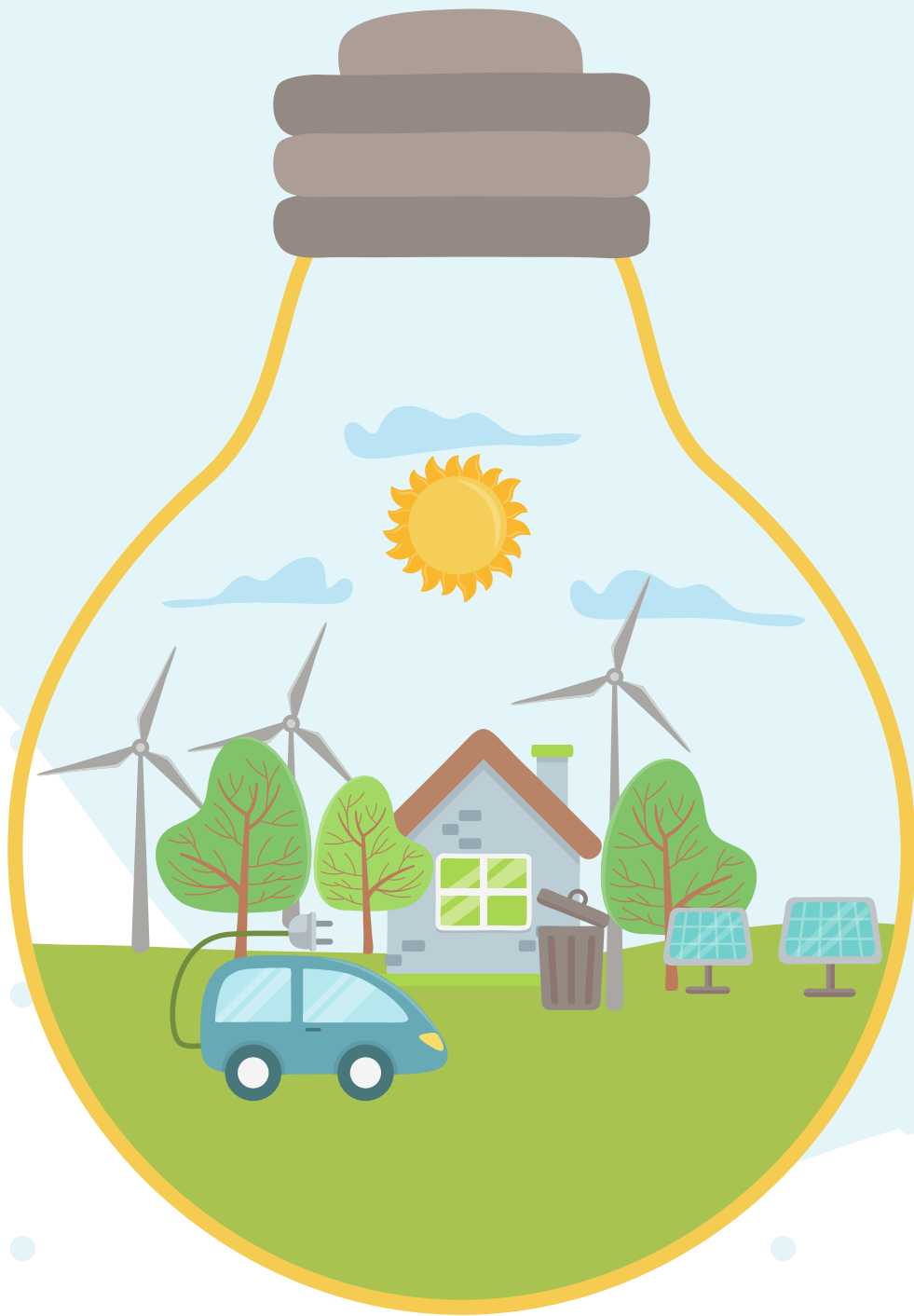
**Winds -
direction,
strength,
airflow,
air quality,
odors**

EARTH



**Soil -
soil type and
characteristics,
presence of
organic matter
and biomass,
vegetation
etc.**

ENERGY



**Energy -
connections,
solar power,
wind power,
biomass,
communication
and pathways**

Urban Permaculture Education

SOCIETY



**Community -
who are the users and
their connections, who
is needed for goal
realization,
neighborhood, wildlife
(domestic and wild
animals),
organizational
structure and
relationships,
ownership and
management**

Urban Permaculture Education



Urban Permaculture Education



Co-funded by the
Erasmus+ Programme
of the European Union